



**LYNFORD VILLA** 

**Weekly Rates  
High Season  
(Dec. 15-April 14):**

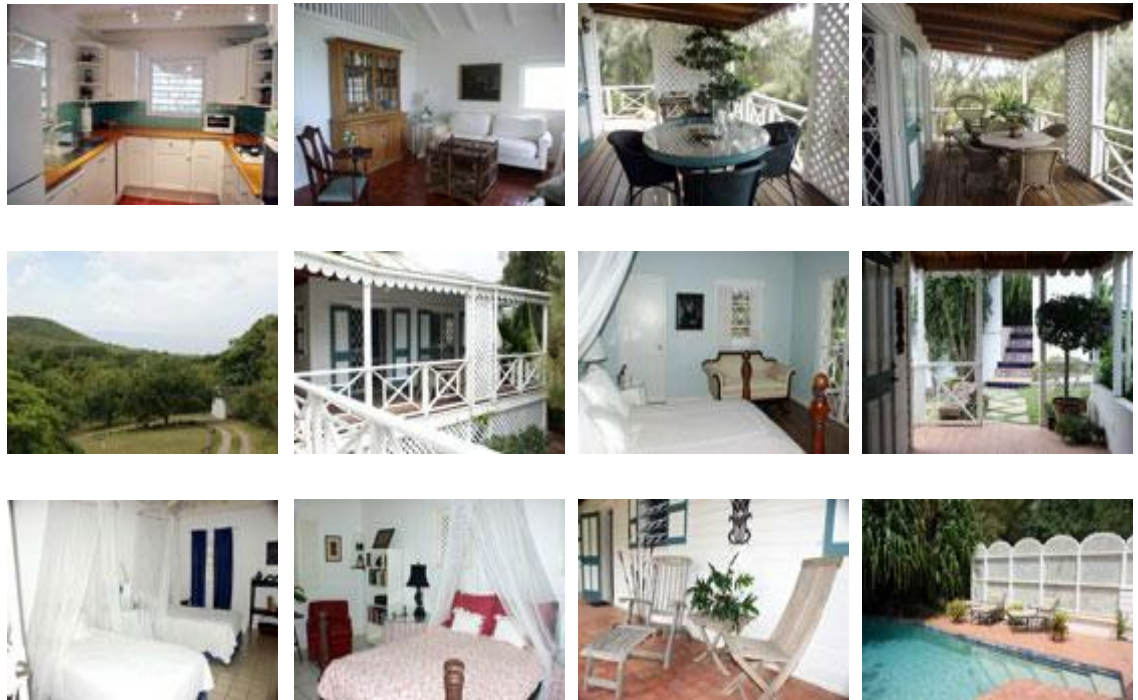
- \$2000 (1 BR)
- \$2500 (2 BR)
- \$2800 (3 BR)

**Low Season  
(April 15-Dec. 14):**

- \$1800 (1 BR)
- \$2300 (2 BR)
- \$2500 (3 BR)

*Note: Prices are subject to an additional 9 percent government accommodations tax.*

Charming West Indian-style home which will provide one of the most authentic Nevis holiday experiences on the island. This wooden-clad home is perfectly maintained and exquisitely furnished with 18th to early 19th century pieces, but with all the necessary modern conveniences. The three bedrooms are all ensuite, one located in a quaint guest cottage. Lovely pool in a garden setting with roofed dining next to water, plus areas for sunning. Gracious appointments for formal or more casual dining, including grill and well-equipped kitchen. House is conveniently located just a short walk down the two-track lane to the renowned Montpelier Plantation Inn with its fine dining, lunches, and tapas offerings. The Botanical Garden of Nevis is also a short walk. Rental will include certificate for welcome drink at Montpelier.





### Room Descriptions

**Master Bedroom:** Comfortable antique double bed with French doors to private outside veranda for with table to enjoy morning coffee. Ensuite bathroom with shower, walk-in closet, and ceiling fan.

**Guest Bedroom 2:** Ensuite guest room with antique twin beds, bathroom with tub and shower, ceiling fan.

**Guest Cottage:** Third bedroom in its own private cottage above the main house with antique double bed, private porch, ensuite bath with tub and shower, ceiling fan and small refrigerator

**Living Room:** Comfortable room with sofa and chairs and antique hutch enclosing flat-screen TV with cable and DVD plus large DVD library collection. Living area includes dining table that seats 6, and French doors that lead out to the front veranda with seating for 6 at round table; large closet in living room houses the bar.

**Kitchen:** Well-equipped cook's kitchen with dishwasher, microwave, range and convection oven; coffee maker and food processor, toaster and full array of cooking implements

### Amenities

Laundry room and large walk-in pantry; high-speed wireless Internet; land phone line; bath amenities by Gilchrist & Soames of London; welcome breakfast and drinks provided; gourmet BBQ; ceiling fans throughout.

### Services

Twice weekly housekeeping service; private chefs available, twice weekly pool and gardening service, assistance with car rental and reservations, provisioning available.

### Location

House is located in the Montpelier Estate area, one of the most sought-after parts of the island near the Montpelier Plantation Inn, a Relais & Chateaux property with its gourmet restaurants, and the Botanical Garden of Nevis. A short ride, just 10 minutes to Windward Beach, and other plantation inns and restaurants at Golden Rock, Old Manor and Hermitage. Charlestown is a 12-minute drive, and beaches on the west coast are about 17 minutes drive. About 20 minutes drive to Nevis international airport.

---

*The above information is believed to have been gathered from reliable sources, but is based upon information gathered from third parties, therefore may not be complete or totally accurate.*

Copyright 2008 Nevis Houses, Sugar Mill Real Estate, All Rights Reserved A GideonCardozo Site

#### For more information:

**Sugar Mill Real Estate**  
**Located at SEASIDE at Cliffdwellers**  
**Nevis, West Indies**  
**Phone: 869.469.1093 (Office)**  
**869.663.8910 (Cell)**  
**917.522.1843 (NY in Nevis)**  
**[info@nevishouses.com](mailto:info@nevishouses.com)**