



WILSON HOUSE 

Price
\$1.6 million

Location
Upper
Zetlands
Estate

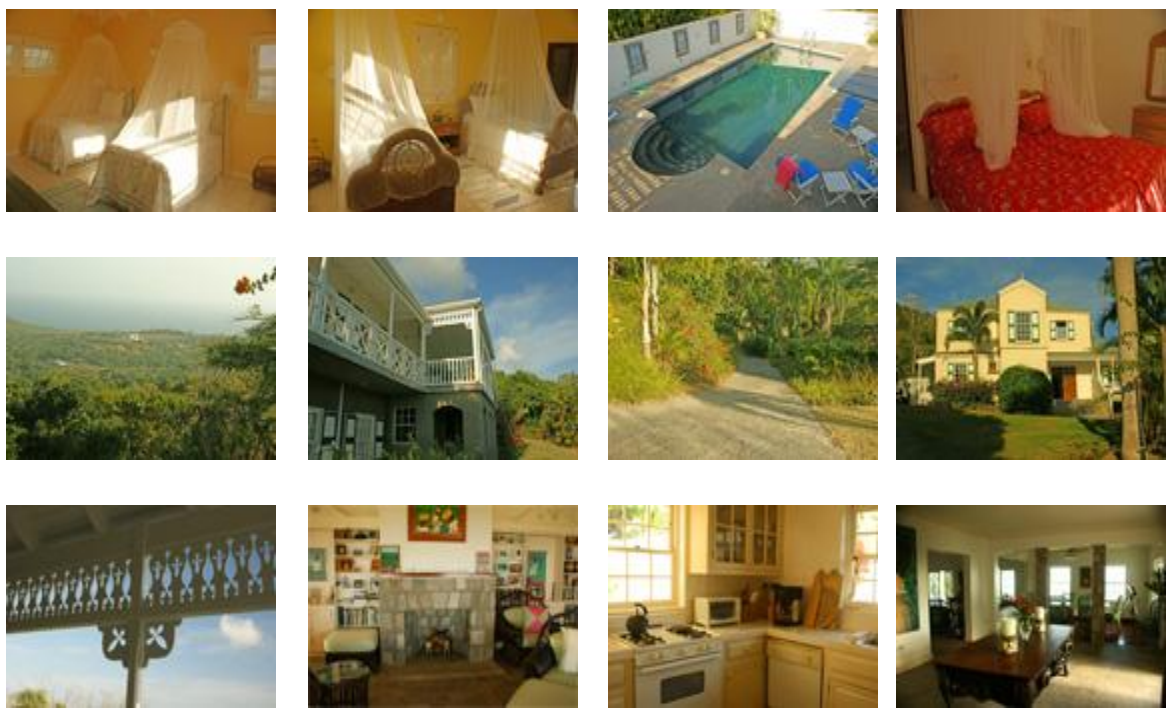
**Size of
Property**
2 acres

**Square
Footage of
House**
3,00+/-
square feet

**Bedrooms /
Bathrooms**
4/3.5

Pool/Jacuzzi
Yes

Set on two prime, extensively landscaped acres, high above most all other dwellings on the island, Wilson Villa provides for a most private and refined setting. From the unique, large foyer with handcrafted Nevis cut stone floors to the massive mantle with wood burning fireplace in the expansive great room, this home creates an elegant feel. The large country kitchen and formal dining room with highly polished mahogany under foot provides a wonderful family retreat. A spacious outdoor veranda facing the sea adds a breezy setting for drinks and casual meals, and early morning sunrise views. The large secluded pool and deck area provides for all day relaxation, and evenings in the spa tub. The villa is conveniently located just minutes from the historic plantation inns at Hermitage, Montpelier and Golden Rock.





Additional Information

Age: Built in 1992

Square Feet: 3000 +/- interior square feet

Living Room: Spacious living room (16' x 18') with working wood-burning traditional stone fireplace for chilly mountain evenings flanked by built-in cabinets and bookcases; French doors lead out to the front veranda.

Master Bedroom: Large master suite (15' x 16') with king bed including master bath (11' x 16') with soaking tub and separate walk-in shower and dressing room with many closets.

Guest Bedrooms: Upstairs two bedrooms (each 12' x 16') with shared hallway bath (8' x 12') in between

Guest Suite: Downstairs guest suite with private bath and separate entrance; A/C

Kitchen: Large country-style kitchen (12' x 18') with classic-style wooden cabinets with glass panels; newer appliances, breakfast bar

Entry Foyer: Unusual open space (14' x 18') at main entryway, perfect for buffets, family gatherings or cocktails.

Dining Room: Open to the foyer and great room, this space (10' x 14') is defined by its mahogany floors and bank of windows facing the views

Powder Room: 6' x 6' located off foyer

Veranda: Front veranda 12' x 22' in largest section, then wraps around front of house

Contractor: Analdo Chiverton

Pool: 28' x 14' recently recoated with Diamond Brite; separate spa

Cistern: 45,000 gallons

Taxes: \$1,000 USD approx.

Construction: Block and masonry with high quality flooring throughout, including hand-cut Nevis stone, Mexican Saltillo tiles and polished mahogany.

Description: Laundry, closet and utility space off kitchen area. With large two-acre parcel, there exists the ability to add a guest cottage. House has beautiful mature gardens and long, winding driveway up to main house. Located at maximum level in the hills (1000+ feet elevation).

The above information is believed to have been gathered from reliable sources, but is based upon information gathered from third parties, therefore may not be complete or totally accurate.

Copyright 2008 Nevis Houses, Sugar Mill Real Estate, All Rights Reserved A GideonCardozo Site

For more information:

Sugar Mill Real Estate
Located at SEASIDE at Cliffdwellers
Nevis, West Indies
Phone: 869.469.1093 (Office)
869.663.8910 (Cell)
917.522.1843 (NY in Nevis)
info@nevishouses.com